



Larchmont Yacht Club

ONE HUNDRED NINETEENTH RACE WEEK

Saturday, July 15, Sunday, July 16, Saturday, July 22, Sunday, July 23, 2017

SAILING INSTRUCTIONS

Cruising/Offshore One Design/Classics	2
Marks and Chart	5
YRA One Design (J70, Viper, Etchells, Internationals, Shields, S Boats etc)	6
1 st Amendment to the YRA One Design SI's	11
Vanguard 15	13



Larchmont Yacht Club

ONE HUNDRED NINETEENTH RACE WEEK

Saturday, July 15, Sunday, July 16, Saturday, July 22, Sunday, July 23, 2017

CRUISING & CLASSIC BOATS

For IRC, PHRF, Offshore One Design Racer/Cruisers and Non-Spinnaker Boats

SAILING INSTRUCTIONS

1 RULES

- 1.1 The regatta will be governed by the *rules* as defined in *The Racing Rules of Sailing*.
- 1.2 The North American Wooden Boat Regatta Series – 2017 Rules will apply for the Classic Boats.
- 1.3 PHRF boats shall observe the current Minimum Equipment Recommendations of YRA of LIS, Race Category C. However, section 2, Structural Features, does not apply to boats not designed and equipped with pulpits, stanchions, lifelines or self-bailing cockpits.
- 1.4 Each boat shall carry a radio capable of transmitting and receiving on VHF channel 73.
- 1.5 Rule V1, Penalty at the Time of an Incident, will apply.
- 1.6 Appendix T, Arbitration will apply as changed below:
At the end of T4, Arbitration Meeting Outcomes, add: (c) If a protest is not withdrawn after arbitration, the arbitrator will not be a member of the jury that hears that protest but will be permitted to observe the testimony presented and offer evidence. This changes rule 63.3(a).

2 NOTICES TO COMPETITORS

Notices to competitors will be posted on the official notice board located on the veranda of the main clubhouse.

3 CHANGES TO THE SAILING INSTRUCTIONS

Any changes to the sailing instructions will be posted no later than 0830 on the day they take effect except that any changes to the racing schedule will be posted by 2000 on the day before they take effect. Copies may be available at the hospitality desk on the veranda.

4 SIGNALS MADE ASHORE

- 4.1 Signals made ashore will be displayed from the main flagpole.
- 4.2 Flags AP over E with 2 sounds (1 when lowered) means: "The race is postponed for Cruising & Classic Boats. The first warning will be made not less than 60 minutes after Flags AP over E are lowered."

5 SCHEDULE

- 5.1 Sat July 15 Distance Race Classic and PHRFNS boats
Windward/Leeward IRC, PHRF, Offshore One Design Racer/Cruisers
- Sun July 16 Pursuit Race IRC, PHRF & PHRFNS
Windward/Leeward Offshore One Design Racer/Cruisers
- Sat July 22 Windward/Leeward IRC, PHRF, Offshore One Design Racer/Cruisers & PHRFNS
- Sun July 23 Execution Rocks Race IRC, PHRF, Offshore One Design Racer/Cruisers & PHRFNS
- 5.2 The first warning is scheduled for 1255 on all days.
- 5.3 Flag A displayed, with no sound, while boats are finishing means "No more racing today".

6 CLASS FLAGS AND CHECK-IN

- 6.1 Scratch Sheets listing each boat by its class will be available by 1800 on Friday, July 14, online at www.larchmontyc.org or at www.yachtscoring.com, and at the hospitality desk during the event. Additional copies may be available from a race committee support vessel.
- 6.2 Each boat shall display the numeral pennant for its division approximately 6-8 feet up on the backstay or, if the boat has no backstay, the starboard shrouds.
- 6.3 Before the first warning each day, each boat shall check in by sailing past the signal vessel, hailing her sail number and receiving acknowledgement from the race committee.

7 THE COURSES

- 7.1 No later than the warning signal, the race committee signal vessel will display the approximate compass bearing to the first mark, distance, and for Windward/Leeward Courses the number of legs to be sailed.
- 7.2 Windward/Leeward Courses designated as follows:
2 - windward, finish to leeward
3 - windward, leeward, finish to windward
4 - windward, leeward, windward, finish to leeward
5 - windward, leeward, windward, leeward, finish to windward
The leeward mark will be approximately 100 yards to windward of the starting line.
All marks shall be rounded to port.
- 7.3 **Pursuit Race** will be government marks E, Y, T then finish, leaving all rounding marks to port. The race committee may add an inflatable mark "A" to windward of the start line. See appendix A for mark descriptions and location. See appendix B for an area chart showing the marks. Total course length is approx. 10 miles.
The race committee may elect to reverse the course and have all marks left to starboard by flying code flag "R" on or before the first warning, and announcing the course reversal over VHF 73.
The start time scheduled for each boat in the Pursuit Race on Sunday, July 16, will be posted online at www.larchmontyc.org by 1800 on Friday, July 14. This schedule will also be available at the Hospitality Desk.
- 7.4 **Distance Race** Courses designated as follows:
71 - Consisting of 3 legs- marks E, M, Finish - approx. 12.5 nm
72 - Consisting of 3 legs - marks G, E, Finish - approx. 11 nm
73 - Consisting of 2 legs - mark O, Finish - approx. 12 nm
74 - Consisting of 2 legs - mark S, Finish - approx. 15.5 nm
75 - Consisting of 4 legs - marks M, X, E, Finish - approx. 14 nm
All marks shall be left to port in courses 71 through 74 and to starboard in course 75
See Appendix A & B for a description of marks, location and chart
- 7.5 **Execution Rocks Race**
The course will be from the start off Larchmont Harbor to green gong "23" off Prospect Point, to nun RG off the southwest end of Execution Rocks Shoal, then to the finish. All rounding marks shall be left to starboard. The race committee may reverse the course and have all rounding marks left to port by flying code flag "R" on or before the first warning, and announcing the reversal over VHF 73. Hen and Chickens South red "2" shall be left to port. See Appendix B for area chart
- 8 MARKS**
- 8.1 Marks for the Windward/Leeward Courses will be yellow inflatables. New marks as provided for in section 10 will be orange inflatables.
- 8.2 Marks for the Distance and Execution Rocks races are government buoys as described in Appendix B
- 9 THE START**
- 9.1 The starting line will be between a yellow flag on the signal vessel and a staff on a buoy displaying a yellow flag.
- 9.2 For the Pursuit Race start only, the starting line will be between an extension of the starting line. Boats participating in the Pursuit Race will start between the pin end with flag to starboard and an inflatable buoy or anchored vessel on the port end.
- 9.2 Boats whose warning signal has not been made shall avoid the starting area during the starting sequence for other races.
- 9.3 A boat that does not start within 5 minutes after her starting signal will be scored Did Not Start (DNS) without a hearing. This changes RRS A4 and A5.
- 9.4 The race committee will endeavor to identify recalled boats by broadcasting their sail numbers over VHF channel 73. Failure of a boat to hear her recall notification or the order of boats recalled shall not be grounds for redress.
- 10 CHANGE THE NEXT LEG OF THE COURSE**
To change the next leg of the course, the race committee will lay a new mark (or move the finish line) and remove the original mark as soon as practicable. When a subsequent new mark is replaced, it will be replaced by an original mark.
- 11 THE FINISH**
The finish will be between an orange flag on the signal vessel and a staff on a buoy displaying an orange flag.
- 12 TIME LIMITS**
- 12.1 **Windward/Leeward** course - time limit for the first boat in a division to sail the course and finish a race if the course is 6 miles or less will be 2 ½ hours.

The time limit for the first boat in a division to sail the course and finish a race if the course is more than 6 miles will be 3 ½ hours.

Boats that fail to finish within 30 minutes after the first boat in that division sails the course and finishes will be scored "Time Limit Expired" (TLE). This changes rule 35.

12.2 **Pursuit Race** - The time limit for the first boat to sail the course and finish will be 1730.

Boats that fail to finish within 1 hour after the first boat sails the course and finishes will be scored "Time Limit Expired" (TLE). This changes rule 35.

12.3 **Distance Race** - The time limit for the first boat in a division to sail the course and finish will be 4 hours.

Boats that fail to finish within 1 hour after the first boat in her division sails the course and finishes will be scored "Time Limit Expired" (TLE). This changes rule 35.

12.4 **Execution Rocks Race** - The time limit for the first boat to sail the course and finish will be 1600.

Boats that fail to finish within 1 hour after first boat in their division sails the course and finishes will be scored "Time Limit Expired" (TLE). This changes rule 35.

13 **WITHDRAWAL**

A boat that retires from a race or that does not intend to start a scheduled race shall promptly report this to the race committee boat via hailing or on the designated VHF channel.

14 **PROTESTS**

14.1 A boat intending to protest or request redress shall report her intention to the race committee on the communications channel (SI 17.2) as promptly after the incident as communications permit.

14.2 Protest forms are available at the front desk.

14.3 The protest time limit is 60 minutes after the RC finish vessel personnel comes ashore. Written protests and requests for redress shall be delivered to protest desk on the 2nd floor of the main clubhouse.

14.4 The protest time limit and a list of protests and requests for redress submitted to the protest desk will be posted promptly.

14.5 Parties to a hearing and their witnesses should remain in the protest area. If they are not available when called, they may not be heard.

14.6 Hearings and arbitration will begin as soon as practicable after protest forms are filed at the protest desk.

15 **SCORING**

15.1 One completed race constitutes a series.

15.2 A boat's series score will be the total of her race scores without exclusion.

15.3 For PHRF, time allowances will be computed using Time on Distance for windward/leeward races. For IRC the boats rating allowance will be applied as a factor of the elapsed time.

15.4 There will be one race for Classic boats. CRF time allowances will be computed using Time on Distance.

15.5 A boat scored TLE will be given 2 points more than the number of finishers in her division, except that she will not be scored worse than DNF.

16 **PRIZES**

16.1 Series prizes for First, Second and Third places in each division will be awarded on Sunday, July 23 following the completion of racing on the front lawn of the Larchmont Yacht Club.

16.2 Perpetual trophies will be awarded at the discretion of the race committee, fastest elapsed time in the Execution Rocks Race, and fastest corrected time in the Execution Rocks Race.

16.3 The team that sets a new elapsed time course record in the Execution Rocks Race will receive a case of Mt. Gay Rum. The current elapsed time record is 43 minutes 57 seconds, set by yacht ELVIS on 19 July 2015.

16.4 This regatta is a qualifying event for the YRA Youth Challenge Cup, the Gitano, Sappho, Competitors, Kings Point and Allegra Knapp Mertz awards.

17 **RADIO COMMUNICATION**

17.1 Except in an emergency, or to meet the requirements SI 13 and 14.1, of a boat that is racing shall not make voice or data transmissions and shall not receive voice or data communication that is not available to all boats.

17.2 The race committee will communicate with competitors on VHF channel 73

18 **DISCLAIMER OF LIABILITY**

Competitors are reminded of the Disclaimer of Liability to which they agreed as stated in the notice of race.

19 **FURTHER INFORMATION**

For further information please contact the Race Committee, Larchmont Yacht Club, 1 Woodbine Ave., Larchmont, New York 10538 Telephone: 914-468-7716 Fax: 914-468-7751, Website: www.larchmontyc.org Email: racecommittee@larchmontyc.org

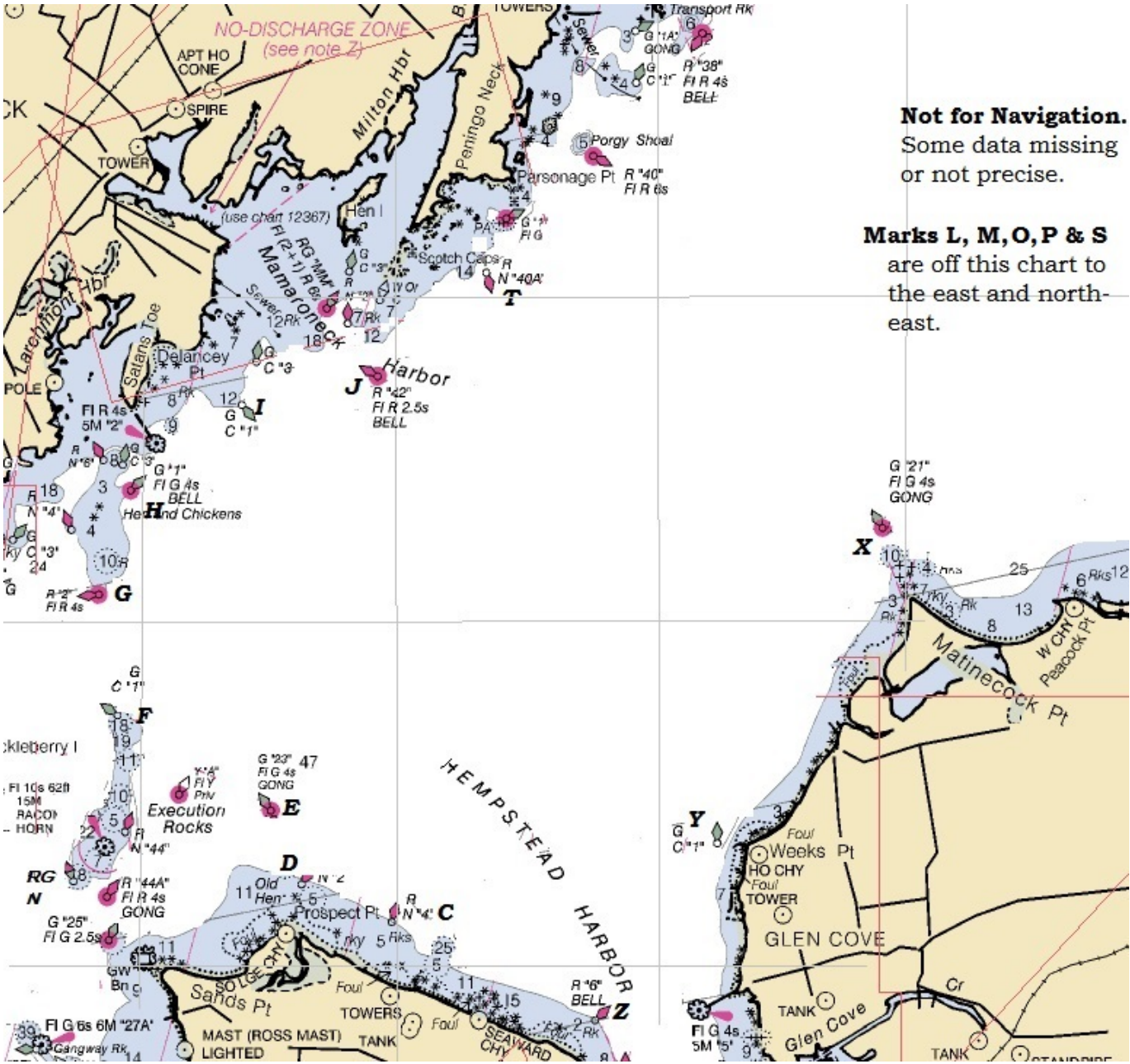
John May - Regatta Committee Chairman
 Cynthia Parthemos - Event Principal Race Officer
 Mary M. Savage - Protest Committee Chairman

APPENDIX A

Letter Code	Approximate Location	Description	LAT (Degrees, decimal min.)	LON
H - hotel	Hen & Chickens	G "1" Fl G 4s BELL	40° 54.8'	73° 44.1'
G - golf	South of Hen & Chickens	R "2" Fl R 4s	40° 54.2'	73° 44.3'
F - foxtrot	North of Execution Rock	G C "1"	40° 53.5'	73° 44.2'
E - echo	Prospect Point	G "23" Fl G 4s GONG	40° 52.7'	73° 43.0'
D - delta	East of Prospect Point	R N "2"	40° 52.5'	73° 42.7'
C - charlie	East of Prospect Point	R N "4"	40° 52.2'	73° 42.0'
Y - yankee	Off Weeks Point (Long Island)	G C "1"	40° 52.7'	73° 39.5'
Z - zulu	Mott Point	R "6" Bell	40° 51.6'	73° 40.4'
X - xray	Matinecock Point	G "21" Fl G 4s GONG	40° 54.6'	73° 38.2'
O - oscar	Oak Neck Point	C "19" Green Can	40° 55.5'	73° 34.2'
L - lima	Lloyd Point	G "15" FL G4s GONG	40° 57.7'	73° 29.3'
S - sierra	Mid Sound	R "32A" FL R 2.5s Bell	40° 58.1'	73°32.8'
P - papa	Cows	R "32" FL R 6s Bell	41°00.2'	73°31.4'
M - mike	Off Manursing Island	R "36" Bell	40° 58.1'	73° 38.8'
T - tango	Off Peningo Neck	R N "40A"	40° 56.1'	73° 41.3'
J - juliett	Off Mamaroneck Harbor	R "42" Fl R 2.5s BELL	40° 55.5'	73° 42.2'
I - india	East of Larchmont Breakwater	G C "1"	40° 55.3'	73° 43.3'

In addition to the government marks the race committee may use one pink inflatable mark, which will be designated **mark "A" (Alpha)**. If the race committee uses mark "A" it will announce its approximate location on the VHF communication channel.

APPENDIX B



Not for Navigation.
Some data missing or not precise.

Marks L, M, O, P & S are off this chart to the east and north-east.



YACHT RACING ASSOCIATION OF LONG ISLAND SOUND 2017 Mid-Sound One Design

SAILING INSTRUCTIONS

1 RULES

- 1.1 The Mid-Sound One-Design series racing will be governed by the rules as defined in *The Racing Rules of Sailing (RRS)*.
- 1.2 Appendix V1 Penalties at the Time of an Incident will apply.

2 NOTICES TO COMPETITORS AND CHANGES IN SAILING INSTRUCTIONS

- 2.1 Notices to Competitors and changes in these Sailing Instructions will be posted on the host club website by 1800 on the day before they take effect.
- 2.2 For Special Events changes to the Sailing Instructions will be posted on the host club website by 1400 on the day before they take effect.

3 SIGNALS MADE ASHORE

- 3.1 Signals made ashore will be displayed at the main flagpole of the club responsible for conducting that day's races and announced on VHF channels 71 and 72. Competitors not in sight of the flagpole may call the race committee on the same channels. AYC and LYC may repeat the signal if not responsible that day.
- 3.2 When flag AP is displayed ashore, "1 minute" is replaced with "not less than 1 hour" in the race signal AP.
- 3.3 Races may be postponed ashore no later than one (1) hour before the scheduled first warning signal.

4 SCHEDULE OF RACES

- 4.1 Series and Special Events will be held on the following dates:

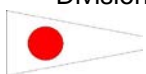
Date	Event or Race Committee	Date	Event or Race Committee
27-May	* Memorial Day Regatta (LYC)	5-Aug	* YRALIS Championship Regatta (AYC)
28-May	* Memorial Day Regatta (LYC)	6-Aug	* YRALIS Championship Regatta (AYC)
3-June	S Boats	12-Aug	Larchmont YC
10-June	Viper 640	19-Aug	~ no racing ~
17-June	Larchmont YC	26-Aug	American YC
24-June	American YC	2-Sept	**YRA PHRF Distance Race Optional - LYC
1 & 2 July	* Independence Day Regatta (AYC)	9-Sept	International One Design
8-July	~ no racing ~	16-Sept	Etchells
15 & 16 July	* Larchmont Race Week	23-Sept	Shields
22 & 23 July	* Larchmont Race Week	30-Sept	Larchmont YC
29-July	~ no racing ~	9-Oct	Larchmont YC

* Special Events: a separate Notice of Race and Entry are required for these events along with Amendments to the Sailing Instructions. ** Special Amendment to the Sailing Instructions for the Distance Race will be issued.

- 4.2 The race committee intends to run 2 or more races each day. The number of races conducted each day is at the sole discretion of the race committee.
- 4.3 The first warning signal will be at 1425 each day. Classes may not be started in numerical order.
- 4.4 The first warning signal for the *Memorial Day, *AYC Independence Day, *LYC Race Week and *YRA Champs will be as stated in their Notice of Race and/or Amendment to these Sailing Instructions.
- 4.5 Course Descriptions for the **YRA PHRF Distance Race will be announced from the signal boat prior to the 1st warning.

5 DIVISION FLAGS

Division flags will be numeral pennants. Class insignias may be substituted.



1) Viper 640



2) J/70



3) Etchells



4) IOD



5) Shields



6) S-Class



7) Other

6 VENUE

The racing area will be in the vicinity of the waters between Larchmont and American Yacht Clubs.

7 THE COURSE

- 7.1 No later than the warning signal, the race committee signal vessel will display the course, the approximate compass bearing and distance to the first mark and the number of legs to be sailed on the course board.
- 7.2 The race committee may elect to give some classes a substantially shorter windward leg than is posted for the other classes. If it does so, it will announce its intentions on VHF channel 78A and will post the number "0" on the signal board next to that Class signifying a shorter windward leg for those classes.

SAMPLE COURSE BOARD (showing a course of 210 degrees, 1.0 nm to the windward mark and course 4 for Div 1-4 and course 2 for Div 5-6 the race: (aft)

Bearing	Range	Division	Course
210	1.	1-4	4
	0	5-6	2

If the course is the same for the succeeding class or classes, their course will be left blank.

- 7.3 Course will be designated as follows with all marks rounded to port:

- 2 - windward, finish to leeward
- 3 - windward, leeward, finish to windward
- 4 - windward, leeward, windward, finish to leeward
- 5 - windward, leeward, windward, leeward, finish to windward
- 6 -triangle, windward, finish to leeward

8 MARKS

- 8.1 Original marks will be either all orange or yellow inflatables.
- 8.2 New marks, as provided in Instruction 10, Changing the Next Leg of the Course, will be the alternative color (or, if necessary, a buoy with a black band).
- 8.3 If the race committee elects to one or more classes a shorter windward leg, it will use a white inflatable as the windward mark for those classes. This will not be a mark of the course for the other classes. A new mark, as per instruction 13, Changing the next leg of the course, will be a white mark with a black band.

9 THE START

- 9.1 The starting line will be between a staff displaying an orange flag on the signal vessel at the starboard end and an orange flag or inflatable buoy at the port end.
- 9.2 Boats whose preparatory signal has not been made shall stand clear of the starting area and all boats whose preparatory signal has been made.
- 9.3 A boat that starts later than 10 minutes after her starting signal will be scored DNS without a hearing. This changes rules A4 and A5.
- 9.4 Any re-commencement of the starting system will be preceded by repetitive sounds and an announcement on Ch 78A approx. 1 minute prior to the warning signal. Boats are reminded to stay within range of the starting area
- 9.5 If there is only one boat in a class, that boat will be recorded for its participation, but not given an individual start. However, the race committee may allow that boat to start with another class, if approved by that class and the race committee. If so, both class flags will be displayed at their warning signal. If two or more classes have fewer than three boats participating on a day, the race committee may, with the approval of the classes, combine their starts – but not for the first race of the day. If so, both class flags will be displayed at their warning signal. Classes will be scored separately.
- 9.6 The race committee will attempt to hail OCS boats by their sail number on VHF channel 78a. The timing and order of such hails or the failure of a competitor to hear the hail will not be grounds for redress. This changes RRS 62.1(a).

10 CHANGING THE NEXT LEG OF THE COURSE

To change the next leg of the course, the race committee will lay a new mark (or move the finish line) and remove the original mark as soon as practical. When in a subsequent change of course a new mark is replaced, it will be replaced with an original mark.

11 THE FINISH

- 11.1 The finish line will be between a staff displaying a yellow flag on a race committee vessel and the finish mark. For a leeward finish, the finish line will be a yellow flag or inflatable at the port end and a yellow flag on a committee vessel at the starboard end. For a windward finish the finish line will be between the windward mark and yellow flag on the race

committee vessel to starboard.

11.2 The race committee may assign a finish position to any unfinished boats, provided that the appropriate finish place for those boats can be determined in a reasonable manner.

11.3 Flag A displayed with no sound while boats are finishing means "No more racing today".

12 TIME LIMIT

The time limit for the first boat in a class to sail the course and finish will be 2 1/2 hours. Boats not finishing within 30 minutes after the first boat in that class will be scored Time Limit Expired (TLE). This modifies rule 35.

13 PROTESTS

13.1 It is recommended that protests and requests for redress be written on the RRS Protest Form.

13.2 For all race days other than Special Events, written protests and requests for redress shall be emailed to the YRA office@yralis.org no later than the 1st business day following the race. These hearings will be heard on the following Thursday at 2000 at a location to be announced unless all parties agree otherwise.

14 SCORING

14.1 The low point scoring system of Appendix A will apply with multiple races scheduled. A boat's series score will be the total of her race scores without exclusion.

14.2 A boat scored Time Limit Expired (TLE) will be given two points more than the number of finishers except that she shall not be scored worse than DNF.

14.3 For Season scoring, Fleets may use the Cox-Sprague scoring system as shown in the One Design Championship Rules section of the YRA Year Book; however, each fleet may choose any scoring system.

14.4 All scores shall be submitted to the YRA Office following the completion of racing. Scores can be emailed to scores@yralis.org.

15 NAVIGATION RULES

All boats are cautioned to observe the Navigation Rules of the Road and to yield right of way to vessels restricted in their ability to maneuver. Racing sailboats are requested to avoid tugs and barges. Competing boats shall not communicate by VHF radio with commercial vessel, except in an emergency. Failure to comply with this instruction may result in a rule 2 hearing against the offending boat.

16 RADIO COMMUNICATIONS

16.1 The race committee will monitor and communicate its intentions via VHF 78a.

16.2 Except in an emergency, a boat that is racing shall not make voice or data communication that is not available to all boats.

17 SAFETY REGULATIONS AND CHECK IN/CHECKOUT

17.1 Prior to the warning signal of her first race each day, a boat shall sail past the stern of the race committee vessel, hail her sail number and be acknowledged by the race committee.

17.2 A boat that retires from a race or does not intend to compete in a race after checking in shall notify the race committee as soon as possible.

18 PRIZES

18.1 YRA of LIS Series prizes will be awarded on Dec 3rd at the YRALIS Annual Meeting to each qualifying helmsman placing first (1 or more qualifiers), second (5 or more), third (8 or more), fourth (15 or more) and fifth (20 or more) in season scores. The Annual Meeting will take place at 1700 at Larchmont Yacht Club.

18.2 Prizes will be awarded as above for a series comprising the Memorial Day, Independence Day, and the YRA One-Design Championship regattas. This series will be scored according to the Cox-Sprague Scoring System. To qualify, an owner must start at least 50% of the races and be an active member of the YRA of LIS.

18.3 This series is a qualifier for the Cow Bay Perpetual Trophy and the Russell J. Nall Memorial Trophy along with other series prizes as defined in the YRA of LIS Racing Program.

18.4 In order to rank as qualifying, the owner must start at least 50% of the races, but not less than 10, designated by each fleet from the Schedule.

19 DISCLAIMER OF LIABILITY

Competitors participate in the regatta entirely at their own risk. See rule 4, Decision to Race. The organizing authority or its member clubs or fleets will not accept any liability for material damage or personal injury or death sustained in conjunction with or prior to, during, or after the regatta.

Further Information Please Contact:

YRA of LIS One Design Committee Chairman - Rich Rubel – rubel.richard@gmail.com and
Cynthia Parthemos – cparthemos@gmail.com

AYC Race Committee Co-Chairs

Don Dowd
917 364 2273
ddowd@pinnacle-ny.com

Sandy Weil
917 714 2561
SandisonWeil@aol.com

LYC Race Committee Chair

Johnny May
516 315 3576
RaceCommittee@LarchmontYC.org

Vipers 640

Peter Beardsley & Jennifer Potts
917 696 8229
WPBeardsley@GMail.com
jkwpotts@gmail.com

J-70

Ed Austin
201 675 5333
EdAAustin@Gmail.com

Etchells

Ron Thompson
646 476 0679
EtchellsFleet1@gmail.com

Shields Fleet One

Peter McWhinnie
914 621 2554
pm@torridonsolutions.com

International One Design

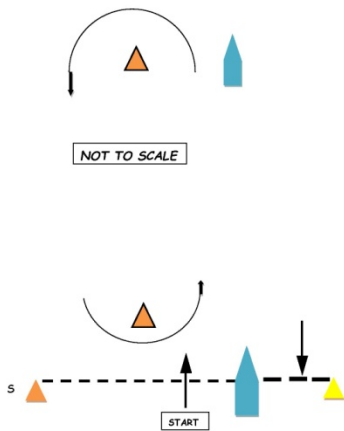
Jennifer Miller
914 262 2749
JMiller@jmhartwell.com

Herreshoff S-Class

Bill Simmons
914 588 9379
BillRSimmons@gmail.com

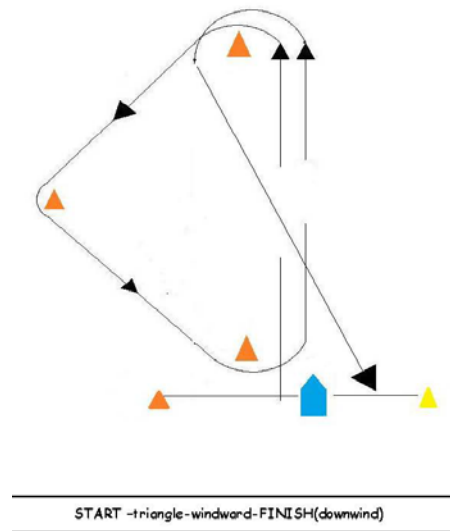
COURSE DIAGRAMS (Schematic – not to scale)

WINDWARD-LEEWARD COURSE DIAGRAM



COURSE 2: START-windward (port)-FINISH(downwind)
COURSE 3: START-windward-leeward-FINISH(upwind)
COURSE 4: START-windward-leeward-windward-FINISH (downwind)
COURSE 5: START-windward-leeward-windward-leeward-FINISH (upwind)

Triangle - Windward - Leeward





LARCHMONT YACHT CLUB

ONE HUNDRED NINETEENTH RACE WEEK

Saturday, July 15, Sunday, July 16, Saturday, July 22, Sunday, July 23, 2017

SENIOR ONE-DESIGN CLASSES

Amendment One

to the 2017 Mid-Sound One Design Sailing Instructions of the Yacht Racing Association of Long Island Sound

1 RULES – add

1.3 Appendix T will apply as changed below:

At the end of T4, Arbitration Meeting Outcomes, add: (c) If a protest is not withdrawn after arbitration, the arbitrator will not be a member of the jury that hears that protest but will be permitted to observe the testimony presented and offer evidence. This changes rule 63.3(a).

1.4 For the Etchells class:

(a) boats shall not haul out from the start of the first race on Saturday until the finish of the last race on Sunday each weekend, except in emergency cases with permission of the race committee.

(b) The rules and regulations of the International Etchells Class Association (IECA) will apply, except where modified by these sailing instructions. Competitors shall comply with the rules of the IECA, including but not limited to: the crew shall consist of 3 or 4 persons and their total combined weight shall be no more than 285 kg.

2 NOTICES TO COMPETITORS AND CHANGES IN SAILING INSTRUCTIONS replace with:

2.1 Notices to competitors will be posted on the official notice board located on the veranda of the main clubhouse. Copies will also be available at the hospitality desk during the event.

2.2 Changes to the sailing instructions will be posted by 1100 on the day they take effect.

3 SIGNALS MADE ASHORE amend 3.1:

3.1 Race Signal AP over Flag W displayed on the main flagpole with two sound signals means the race is postponed for the One-Design circle.

4 SCHEDULE OF RACES replace with:

4.1 The race committee intends to run multiple races each day. The number of races conducted each day is at the sole discretion of the race committee.

4.2 The first warning signal will be at 1225 each day. Classes may not be started in numerical order.

4.3 If a class has opted to sail in the “Execution Rocks Race” on July 23, they will sail that race under the notice of race and sailing instructions of Larchmont Race Week for cruising boats, available on the club’s website. Any class choosing this option will not be given a start on the one-design circle on July 23. Class Fleet Captains shall inform the race committee by 1900 Thursday, July 13, 2017 if their class will sail the Execution Rocks Race.

5 DIVISION FLAGS add:

5.1 Divisions are numbered as shown in the YRALIS sailing instructions except as modified here: on Sunday, July 23 only - Class Flag 0 – J/105;

5.2 Divisions may not be started in numerical sequence. The first race of each day, the order of starts will be: Viper 640, Etchells, J/70, Shields, IOD, S-Class.

7 THE COURSE - Replace 7.3 to add a windward offset and leeward gates:

7.3 Courses will be designated as follows:

2 – windward, finish to leeward

3 - windward, leeward mark **or gate**, finish to windward

- 4 - windward, leeward mark **or gate**, windward, finish to leeward
- 5 - windward, leeward mark **or gate**, windward, leeward mark **or gate**, finish to windward
- 6 -triangle, windward, finish to leeward.

There will be an **offset mark** to the port side of the windward mark, to be rounded each time the windward mark is rounded. All marks shall be left to port, except if a leeward gate is set.

8 MARKS - replace 8.1 and 8.2

- 8.1 Original marks will be orange inflatables. **Offset marks will be orange ball buoys.**
- 8.2 A new mark, as provided in Instruction 10, Changing the Next Leg of the Course, will be an orange inflatable with a black band). If it becomes necessary to set another new mark it will be the original mark.

13 PROTESTS – is replaced with

- 13.1 A boat intending to protest for an incident while racing shall notify the race committee promptly upon finishing the race by VHF.
- 13.2 Protest forms are available at the front desk.
- 13.3 Written protests shall be delivered to the protest desk located on the second floor of the clubhouse.
- 13.4 The protest time limit is one hour after the race committee comes ashore and will be posted.
- 13.5 A list of protests filed at the protest desk will be posted.
- 13.6 Hearings will begin as soon as practicable after written protests are filed.

14 SCORING - replace 14.1 with:

- 14.1 One completed race constitutes a series. If fewer than five races are completed a boat's series score will be the total of her race scores. If five or more races are completed a boat's series score will be the total of her race scores excluding her worst score.

18 PRIZES - is replaced with:

- 18.1 Prizes will be awarded on Sunday, July 23 following the completion of racing on the front lawn of the Club.
- 18.2 Series and perpetual prizes will be awarded for classes that qualify under NOR 2 for first, second and third place finishes
- 18.3 Awards for the Etchells Long Island Sound Championship and the Viper 640 Mid-Atlantic Championship will be presented on Sunday, July 16 following the completion of racing, on the front lawn of the Club.

19 DISCLAIMER OF LIABILITY replace with:

Competitors are reminded of the Disclaimer of Liability to which they agreed as stated in the Larchmont Race Week Notice of Race.

23 FURTHER INFORMATION

For further information please contact the Larchmont Yacht Club, 1 Woodbine Ave., Larchmont, NY 10538. Telephone 914-834-2440. Fax 914-468-7716. Website: www.larchmontyc.org.

John May – Regatta Committee Chairman
Nicholas E. Langone – Principal Race Officer
Mary M. Savage – Protest Committee Chairman



LARCHMONT YACHT CLUB

119th Larchmont Race Week

including

Vanguard 15 National Championship

Saturday, July 22 and Sunday, July 23, 2017

Sailing Instructions

1 RULES

- 1.1 The regatta will be governed by the *rules* as defined in *The Racing Rules of Sailing*.
- 1.2 Non-inflatable, Coast Guard-approved personal flotation must be worn by skipper and crew at all times while on the water, except briefly while changing or adjusting clothing or personal equipment. This changes rule 40 and the preamble to the Part 4 rules.
- 1.3 Appendix V1, Penalty at the Time of an Incident, will apply.
- 1.4 Appendix T will apply as changed below:
 - At the end of T4, Arbitration Meeting Outcomes, add: (c) If a protest is not withdrawn after arbitration, the arbitrator will not be a member of the jury that hears that protest but will be permitted to observe the testimony presented and offer evidence. This changes rule 63.3(a).
- 1.5 Class Rule 4.2 is amended to permit the use of non-builder sails; however, boats must declare their use at registration. A boat or equipment may be inspected at any time for compliance with class rules.
- 1.6 Boats may be required to display bow numbers provided by the organizing authority.

2 NOTICES TO COMPETITORS AND CHANGES IN SAILING INSTRUCTIONS

- 2.1 Notices to competitors will be posted on the official notice board on the Veranda.
- 2.2 Changes to the sailing instructions will be posted by 1100 on the day they take effect.

3 SIGNALS MADE ASHORE

- 3.1 Signals made ashore will be displayed from the flagpole on the front lawn
- 3.2 Race Signal AP over Flag V with two sound signals means the race is postponed for the Vanguard circle.
- 3.3 When flag AP is displayed ashore, "1 minute" is replaced with "not less than 60 minutes" in race signals AP.

4 SCHEDULE

Friday, July 21	
1700-1900	Registration and Informal Gathering
Saturday, July 22	
0900 – 1100	Registration – Hospitality Desk
1100	Skippers' Meeting – at or near the Pandemonium
1130	Harbor Start
1225	First Warning
Sunday, July 23	
1130	Harbor Start
1225	First Warning
	Awards after Racing

5 RACING AREA

The racing area will be in Long Island Sound south of Larchmont Harbor. Sailors should be aware of local reefs, including North Ledge off the western front floats, Umbrella Rock inside of Can "7" and Hen and Chickens to the west of the harbor.

6 COURSES

6.1 Courses will be either Windward/Leeward using either configuration W/L1 or W/L2 or Harry Anderson using configuration HA.

- Course W/L1 consists of a windward mark (to port) and an offset mark (to port), finishing to leeward leaving the race committee boat to starboard.

- Course W/L2 consists of a windward mark (to port) and an offset mark (to port), a leeward gate (to leeward of the finish line), finishing to windward leaving the race committee boat to port. The committee may replace the leeward gate with a leeward mark (to port), and announce that before the start.

- Course HA consists of 4 marks - windward mark (to port), gybe mark (to port), starting pin (to starboard), leeward mark (to port), finishing to windward leaving the race committee boat to port.

6.2 Courses will be announced before each race from the committee boat. Course lengths are at the discretion of the committee.

6.3 The start and finish lines are “open” and may be disregarded except when maneuvering to start or finish.

6.4 The offset mark will be set to port of the windward mark and approximately perpendicular to the course axis.

7 MARKS

The windward mark and the gate marks will be orange ball buoys (“hippity-hops”). The offset mark will be a white ball buoy.

8 THE START

8.1 Races will be started in accordance with Appendix U, Audible-Signal Racing System. This changes rule 26

8.2 The starting line will be between a staff displaying a day-glow green flag on the committee boat and a staff displaying a day-glow green flag on the port end. The staff on the port end of the starting line may be set on a stationary pin boat.

9 RECALLS

9.1 The race committee will endeavor to identify recalled boats by hailing their sail numbers by loud hailer. Boats may be recalled by the committee at either end or both ends of the starting line. Flag X will not be displayed, nor will a horn blast be given; this changes rule 29.1.

9.2 Failure of a boat to hear her recall notification and the order and timing of such hail shall not be grounds for redress.

9.3 If Flag I is displayed prior to the warning signal of a race, rule 30.1, the I Flag Rule, will be in effect for that start. This changes Race Signals.

10 THE FINISH

10.1 The finish line will be between a staff displaying a yellow flag on the signal boat and a staff displaying a yellow flag on a nearby buoy.

10.2 Immediately after finishing, a boat shall sail to the starting line area and stay clear of the finish line and other boats still on the race course. Boats failing to keep clear of the finish line area after finishing may be subject to protest.

11 TIME LIMIT

The time limit for the first boat to sail the course and finish will be 45 minutes. Boats failing to finish within 15 minutes after the first boat sails the course and finishes will be scored “Time Limit Expired” (TLE). This changes rule 35.

12 WITHDRAWAL

A boat that withdraws from the race or that does not intend to start a scheduled race shall notify the race committee at the first opportunity.

13 SCORING

- 13.1 One completed race will constitute a series.
- 13.2 The race committee intends to run multiple races. If fewer than 6 races are completed, a boat's series score will be the total of her race scores. If 6 or more races are completed, a boat's series score will be the total of her race scores excluding her worst score.
- 13.3 TLE will be scored 2 points more than the number of finishers but not worse than DNF.

14 PROTESTS, REQUESTS FOR REDRESS AND ARBITRATION

- 14.1 A boat intending to protest is requested to notify the race committee promptly upon finishing that race.
- 14.2
 - (a) Protest forms are available at the front desk.
 - (b) Written protests and requests shall be delivered to the jury desk located at the top of the main stairs of the clubhouse no later than one hour after the race committee comes ashore.
 - (c) The protest time limit and a list of protests filed at the jury desk will be posted.
 - (d) Arbitration meetings, and protest and redress hearings will begin as soon as practicable after written protests are filed. Witnesses must be available when called. If they do not appear when called, they may not be heard.
- 14.3 On the last scheduled day of racing, a request for redress based on a protest committee decision shall be delivered no later than 30 minutes after the decision was posted. This changes rule 62.2.

15 PRIZES

- 15.1 Series prizes for First through Fifth places will be awarded on Sunday, July 23 following the completion of racing on the front lawn of the Larchmont Yacht Club.
- 15.2 The top finisher will be recognized as the Vanguard 15 Class National Champion.

16 DISCLAIMER OF LIABILITY

Competitors are reminded of the Disclaimer of Liability to which they agreed as stated in the Notice of Race.

17 MEDIA WAIVER

The organizing authority shall have the right to use any images and sound recorded during the event, including a participant's name, voice, or likeness, as well as images of boats, free of any charge.

18 FURTHER INFORMATION

For further information please contact the Regatta Committee, Larchmont Yacht Club, 1 Woodbine Ave., Larchmont, NY 10538. Telephone 914-468-7716. Fax 914-468-7751.

Website: www.larchmontyc.org. Email: racecommittee@larchmontyc.org

John May – Regatta Committee Chairman
Buddy Wolf – Event Principal Race Officer
Mary M. Savage – Protest Committee Chairman